

BroadView

Security Protocols global management



Fig. 1: Interface for Video monitoring devices

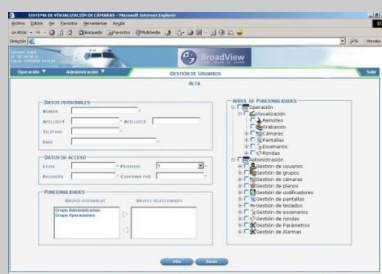


Fig. 2: Interface for Safety and Access control devices management



Fig. 3: Interface for Security Systems monitoring, with integrated management through synoptic map

BROADVIEW provides complete management of safety processes, integrating IP and analog CCTV systems with Access Control, Perimeter Control, Fire alarm, Intrusion and other security systems.

BROADVIEW is based on open source technology, Internet standards and SOA architecture, combining the optimal technologies coming from multiple vendors.

APPLICATIONS

BROADVIEW is a solution oriented to those customers in need of monitoring large or distributed facilities, reducing operational costs and increasing the effectiveness of surveillance teams in case of emergencies.

Smart Cities

-Integrated monitoring in a single Control Center of the multiple Security, Protection and Control Systems operating over the urban areas and the municipal networks: water, electricity, communications, transport, etc.

Corporate and Institutional Campus

-Centralized monitoring and recording of video cameras (IP and analog) and other security and access control systems on college/corporate campus

Airports, Railway, Bus and Metro stations and Seaports

-Monitoring and recording of CCTV cameras (IP and analogue), Access control and other security systems in areas with a heavy traffic of people and goods.
-Automated protocols implementation and support to Decision-making process.

Central Alarm Headquarters

-Transparent integration of the multiple customer security infrastructures, facilitating efficient emergency management, improving redundancy between control centers and reducing operational costs.

Prisons

-Integration into a single interface of the building security systems: Video Surveillance, Access Control, Corridors, Fire Protection, Perimeter Control, Outer lighting...

Other Major Venues

-Monitoring and recording of video cameras (IP and analogue) and other security and access control systems in large venues with heavy traffic of people and/or vehicles: Sports arena, Hotels, Convention centers, etc.

Key Benefits

- Multivendor solution enabling flexible alarm integration from a large number of control and safety devices: Video-alarms, perimeter control systems, access control systems, etc.
- Support to decision making process to improve the effectiveness of surveillance teams and reduce operational costs
- Protocol Management module, configurable for programming automatic actions triggered by an alarm or combination thereof
- High Availability solution, supporting cluster configuration.
- Proven record track for application on large scale operations with elevated traffic.

- Scalable solution with open architecture, to allow a fast growth in concurrent users and integrated devices.
- Web-application with a friendly and easy to use interface and ubiquitous access from the intranet.
- Different ways to access devices: device identifier, synoptic maps, device list, etc.
- Safety in the access to the application functionality, through granular configuration of user permissions.
- Easy maintenance: Single software version located on central server, with no distribution to user's PC required.
- Total independence of platform technology, ensuring compatibility with multiple operating systems.
- API available for integration with external systems

SECURITY

-Establishes the permission access policy in order to control the functionality and resources to which a user system has the access.

-Common profiles to define application feature users are set based on their group membership.

-A user can belong to as many groups as wanted, getting the functionality associated with each group.

-Capability to assign, by user, additional permissions or subtract privileges in relation with those of the group.

CONTROL

-In case of resource consumption by a user, any other user with a higher priority can take control over it after being informed by the system.

-Domestic policy priorities are defined by the system administrator

-Resource utilization is subject to inactivity timeouts, in order to avoid resource permanent block.

CCTV SYSTEM MANAGEMENT

BROADVIEW natively integrates CCTV technology, helping preventive monitoring (automated or manual) and forensic analysis:

Camera Monitoring

-Selection of available cameras through hierarchic menu levels or by navigating through synoptic plans (GIS).

-PTZ telemetry control for mobile cameras, with adjustable speed in the execution of their movement.

-Dynamic management of encoders to satisfy the demand for camera displaying.

-Cam-switching in external monitors with associated encoder (static encoder) for images displaying.

Running Rounds

For automatic switching of cameras in pre-defined time intervals.

Running Scenarios

User displays on the monitor the images provided by selected cameras.

Local Recording

For images captured by system cameras, enabling later monitoring

Command Center



or extraction to other media.

Keyboards and Monitor planner

Allowing keyboard enabling or blocking in time intervals for certain monitors.

Integration

With Access control, perimeter control, fire-alarm and other systems. Compatible with **Onvif**, Microsoft CityNext, etc.

ACCESS CONTROL SYSTEMS

BROADVIEW solution implements:

-Integrated display of alarms generated by access control and perimeter systems, with the possibility of combination with video signal from closest cameras

-Automatic launch of actions triggered by alarms: automatic recording, messaging, activation of security protocols, etc.

FIRE CONTROL SYSTEMS

BROADVIEW solution implements:

-Display and recording of alarms generated by Fire Control Systems.

-Automatic launch of actions triggered by alarms: automatic recording, messaging, activation of security protocols, etc.

SECURITY PROTOCOL MANAGEMENT

-This Module is the implementation tool for the Operation Plans (Emergency, Security ...) of each Service Unit.

-When occurring a series of pre-defined circumstances, the system

automatically launch actions over the security systems, without requiring human operator intervention.

-Complete system, covering reception, validation and archiving of operational procedures.

-Reports parameterization is done through a simple and user friendly environment.

APPLICATION ADMINISTRATION

-**System Users**, with authentication and customized access to the application features, ensuring secure access.

-**User Groups**, setting the permission levels by group members.

-**Synoptic Plans** for camera navigation and selection.

-**Rounds and Scenarios**, for configuring sequential switching of cameras in time intervals defined by the user (round) or monitors (scenario)

-**Camera access** for image monitoring.

-**Monitors**, to define the external monitors upon which to display camera images.

-**System-encoders**, allowing configuration of performance parameters: type (dynamic / static), network parameters (IP, IP multicast, port...)

-**Keyboards**, to define which keyboards may be allocated on each monitor.



Authorized Reseller



Ciudad de la Imagen
C/ Fernando Rey
28223 Pozuelo de Alarcón
Madrid - SPAIN

Ph.: +34 91 211 07 00
Fax: +34 91 518 92 64
www.xtreamsig.com
comercial@xtreamsig.com